

# FACTSHEET

## Production Processes

### Documents for production order and process order



#### What is DOC4PRO?

The DOC4PP modules enable the output of documents for production processes (production orders) as well as the **automatic retrieval** and **output** of relevant documents with the SEAL Systems document output management solution.

By connecting the output program with the production process, all relevant document attachments can be printed together with the SAP production forms in **correct sequence, as a single job**. This method supports the processes for production orders (PR) and process orders (PI)..



#### What can DOC4PRO do?

The document output can be done manually through an appropriate transaction or automatically with integration into the print programs of the production order process.

Selection controls and configuration provide extensive retrieval of relevant document and material attachments. Several methods for assignment, identification and selection of documents are supported. The output is either done automatically with preconfigured, standardized methods or after manual selection from a list of retrieved documents.



#### Who needs DOC4PRO?

All production process staff who have to:

- Provide **additional documents** with a production order.
- **Seamlessly track** the distribution of documents.
- **Avoid manual effort** through automated output.
- Prepare and send production orders to various **recipients**.

#### Advantages

- ⊕ Full integration into SAP business processes and applications.
- ⊕ Reduced manual effort with single click functionality.
- ⊕ Full resolution of bill of materials.
- ⊕ Stamps and watermarks.
- ⊕ Table of contents with structure documents.
- ⊕ Job in sequenced PDF format.
- ⊕ Technical format support, including CAD drawings.



## Automatic Identification of Assigned Documents to a Production Order ...

### ::: Supported Document

#### Types

- Forms (SAPScript, SmartForm, AdobeForm).
- DMS documents linked to any object, including material master, bill of materials, bill of materials positions.
- DMS structures and document hierarchy.
- Documents linked through Archive Link.
- Attachments in Services for objects (GOS/BDS).

### ::: Integration

- As a single Transaction with interactive user interface.
- Integration in SAP PLM 7 or earlier versions.
- Optional integration into SAP print programs for automated output functionality.

### ::: Selection Criteria for Documents

A number of filters can be used for selection of the relevant documents pertaining to a Production Order, including:

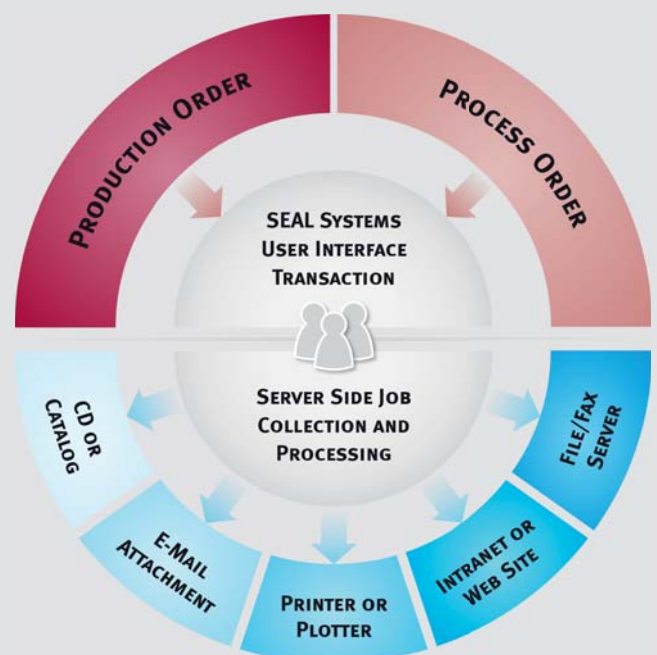
- Document type
- Document status
- Latest version
- Only released documents
- Remove duplicates
- Document features
- Additional filter criteria

The screenshot shows the SAP transaction 'Fertigungsauftrag: Dokumente ermitteln/ausgeben'. The interface includes a menu bar (Programm, Bearbeiten, Springen, System, Hilfe) and a toolbar. The main area is divided into several sections for parameter configuration:

- Auftragsparameter:** Auftragsnummer (60003406), Dokumente zum Auftrag (checked), Fertigungshilfsmittel (Dok.) (checked), Dokumente zu FHM finden (unchecked), Steuerschl. Prüfung (input field).
- Vorgangparameter:** Vorgang (0060).
- Komponentenparameter:** Dokumente zu Komponenten (L), Dok. zu Komponenten-STL-Kopf (input field), Dokumente zu Objekt (M).
- Dokumenteinschränkung:** Dokumentart (CH2), Nur freigegebene verwenden (checked), Keine Duplikate ausgeben (checked), Nur höchste Version (checked).

The SAP logo and system information (SAP, >> /SEAL/PR, sap260 | INS) are visible at the bottom.

Configuration for identifying attachments



Collection and distribution of production documents

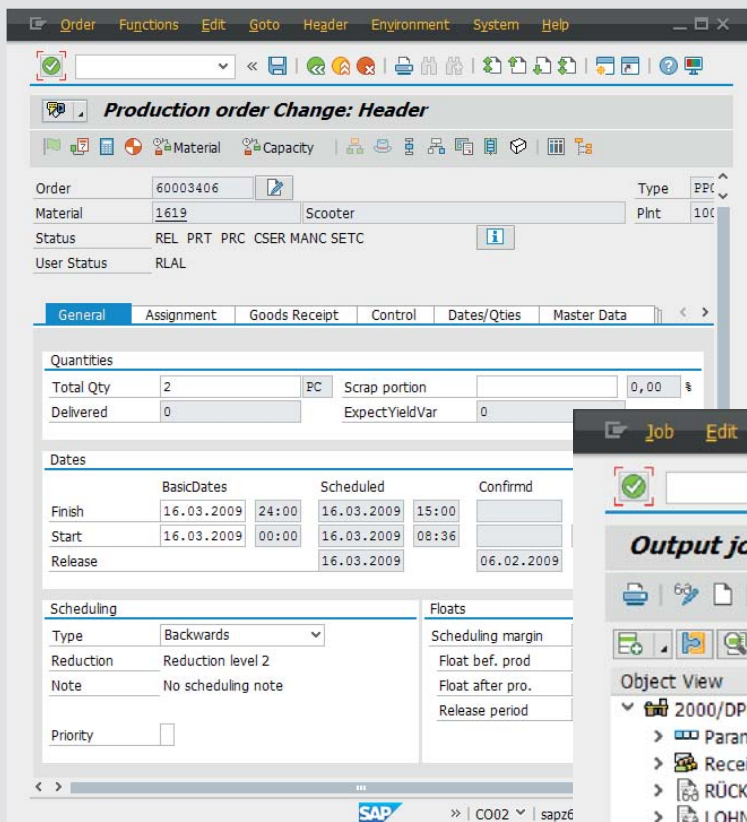
# Documents for Production Processes

## Configurable Userexits

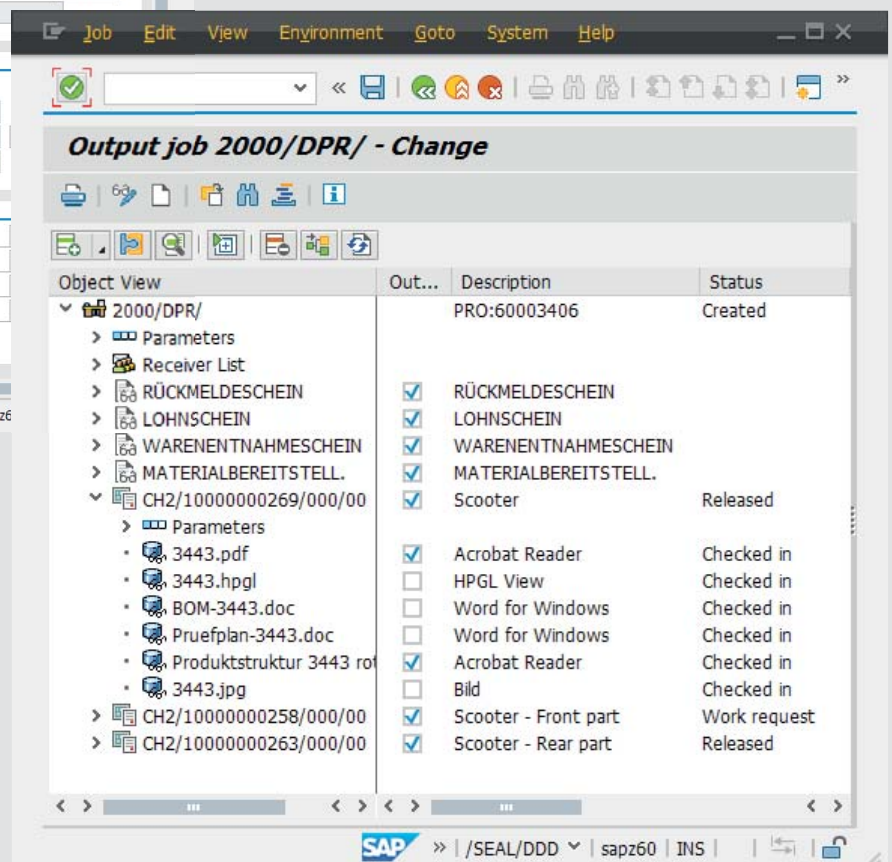
Additional user exits are available to bring enhancements to functional requirements or legacy operations.

## Logging

Process logging can be done with SAP application logs using configurable settings.



**SAP® Certified**  
Integration with SAP Applications



Complete list of forms and attachments as seen is SEAL Systems GUI for SAP

Output job generation with all relevant documents and metadata for a production order

# Documents for Production Processes

## Installation

SAP System:

Installation is done through SAP Transports. The basic customization is done with the press of a button using BC Sets.

External Server:

The output system is installed by SEAL Systems.

## Language Support

The product is fully Unicode-compatible and available in English, German, French and Norwegian.

Additional languages can be supplied upon request.

## Scope of Delivery

Software is delivered as Transports. Detailed documentation (PDF) in English and German with practice examples is provided.

Output system for external server.

## Product Code

SP-PRO (Production Processes)



## System Requirements

SAP versions 4.7 or higher up to actual ECC 6.0 Enhancement Package.

See all details for recommended computer equipment under [www.sealsystems.com/service-support/computer-equipment/](http://www.sealsystems.com/service-support/computer-equipment/)

## Related Products and

### Options

- SP-PUR (Purchase Orders, RFQ)
- SP-SD (Sales Distribution)
- SP-PM (Plant Maintenance)
- SP-PS (Project System)
- SP-MM (Materials Management)

Adalbert Nübling and Debra Garls are specialist for your questions concerning:

*Provision and distribution of documents – Without any disadvantages*



**Europe/Asia/Australia**

Adalbert Nübling  
Tel +49 (9195) 926 120  
[adalbert.nuebling@sealsystems.de](mailto:adalbert.nuebling@sealsystems.de)



**USA/Canada/Americas**

Debra Garls  
Tel +1 774 200 0933  
[debra.garls@sealsystems.com](mailto:debra.garls@sealsystems.com)



Email: [info@sealsystems.com](mailto:info@sealsystems.com)  
Web: [www.sealsystems.de](http://www.sealsystems.de)



We would be happy to answer your questions around the generation of documents from SAP and show you the possibilities for your company.



© 2019 SEAL Systems AG. PLOSSYS is a registered trademark of SEAL Systems AG. Other computer and software names mentioned in this brochure are trade names and/or trademarks of the respective manufacturers. Subject to change without notice.  
Date: January 23, 2019  
V243-20130218-0-en