

FACTSHEET

PLOSSYS® netdome

Enterprise-wide Output Management System



What is PLOSSYS netdome?

PLOSSYS netdome is a powerful Output Management Engine, which optimally meets all requirements for enterprise-wide print and distribution of documents and information. PLOSSYS netdome is the central platform of the Corporate Output Management solution from SEAL Systems.



What can PLOSSYS netdome do?

PLOSSYS netdome connects all applications with all output channels. It does the data preparation (conversion, stamping, scaling), spooling and controls the output channels (printer, plotter or electronic output methods). PLOSSYS netdome works with all data formats from all applications (ERP, host systems, web, Windows® and Office®, digital archive, DMS, PLM, and CAD) in the company and provides trouble-free, optimally controlled output on all output channels. Furthermore, it provides a wide range of functions around all aspects of your print structure and processes.



Who benefits from PLOSSYS netdome?

All companies and institutions with business-critical print processes. All CIOs, who want to enhance efficiency and safety for print infrastructure and want to reduce print costs. All people responsible for IT infrastructures who want to spend less time on error investigation and recovery of print processes and want to optimize output administration. All users: because printing is easy if it always works.

PLOSSYS netdome in a nutshell

- Control of all output of an enterprise (from all applications to all output channels)
- Print and electronic output
- Large and small format
- Integrated conversion for device and application-independent processing of output data streams
- Reliable, fail-safe spooling at all enterprise locations
- Complete transparency of all output processes for users and administrators
- Cost and throughput control with integrated accounting

The Advantages

PLOSSYS netdome means: One centralized Output Management System for all tasks in the company. This concept has many advantages for the enterprises, its users and administrators:

High economic efficiency

- Lower administrative, hardware, and User helpdesk costs due to:
- Reduced administrator efforts through a generic driver for SAP and Windows
- Reliable processes and centralized control
- Easier forms generation and management
- High productivity through automatic processes
- Reduced paper consumption through electronic distribution methods and Secure & Pickup printing
- Free selection of hardware brands and models possible via device and system independence
- Optimal configuration of printer fleet basing on accounting information
- Green IT: Optimal printer fleet usage of all printers from all applications, reduction of paper
- Investment protection through certified, market leading product
- Reduction of the number of required print servers (for example Windows Print server): **One server for all output.**

Maximum security

- Failover concepts provide high availability for print processes
- Scalable throughput with load balancing
- Automatic reactions to errors reduce downtime and maintenance costs
- Encryption mechanisms and detailed user and rights management

Complete process transparency

- Job tracking available to users and administrators (up to paper tray control) enhance user satisfaction and reduces Help desk costs
- Central accounting of all output for cost control and assignment

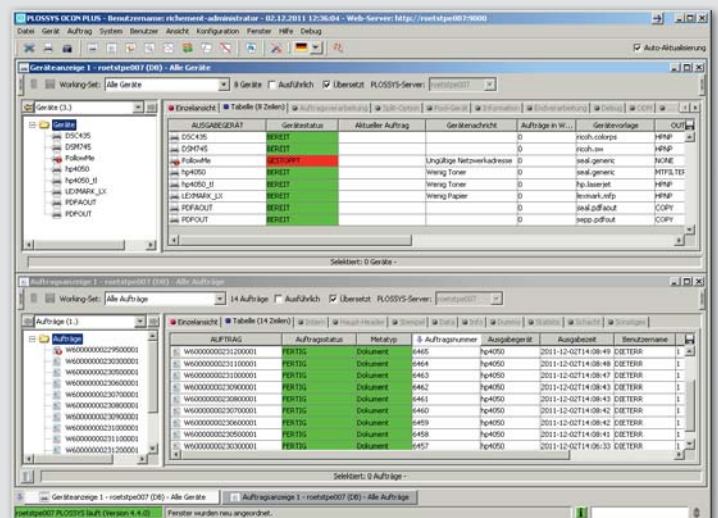
Enhanced quality

- Optimized device control for all printers: all manufacturers, large and small format, desktop and multi-function devices, office or high performance printers
- Consistent look to print images on all devices
- Automatic processes reduce errors and enhance output speed
- Consistent application integration through standardized layout
- High user acceptance

Central Administration: OCON+

For system administration and user helpdesk the operator console OCON is a powerful tool for control and supervision of the complete output management system:

- Server-crossing system administration
- All devices and output jobs at a glance
- Job status monitor
- Device status overview
- Start, stop, repeat, redirect, delete, [...] of output jobs and queues



Integrated Conversion of Graphical and Application Formats

- TIFF, PDF, PDF/A, PostScript, CGM, HP-GL, JPG, ASCII, SAP GOF [...]
- Automatic rotation, scaling and device-specific processing
- **Optionally:** CAD, WORD, EXCEL, PowerPoint, Outlook, Open Office, Lotus Domino, [...]

Control of all Devices with Optimized Drivers

- Drivers available for all important printers on the market (more than 1,200 actually available)
- Support and control of all device characteristics (trays, finishing, ...)
- Simple installation of new devices through a central management environment

Enhanced Security

- User and rights management
- Data encryption and data compression on demand
- Use of standardized protocols (especially IPP) for data transfer and communication

High Availability/Fail-safe/Load balancing

- Location-wide fail-over strategies
- Simply scalable
- Load balancing support from nearly all system environments
- Early recognizing of critical situations and starting of respective reactions with active incident management

Features

- **Stamp and watermarks** for ISO 9000-compatible document distribution
- Full **barcode and Unicode support**
- **Cost recording and transparency** through integrated accounting
- **Rule-based output distribution:** according to size, process, user [...]
- Extensive **system and application integrations for SAP, Windows, PLM, PDM, CAD.** Integration in all open systems architectures up to mainframe environments with standardized interfaces like **IPP, JPS and LPD**
- **User self service** for job administration and printer configuration for Windows
- **Cross-platform working:** Server and client processes are offered for Windows and Unix platforms or platform-independent with JAVA technology

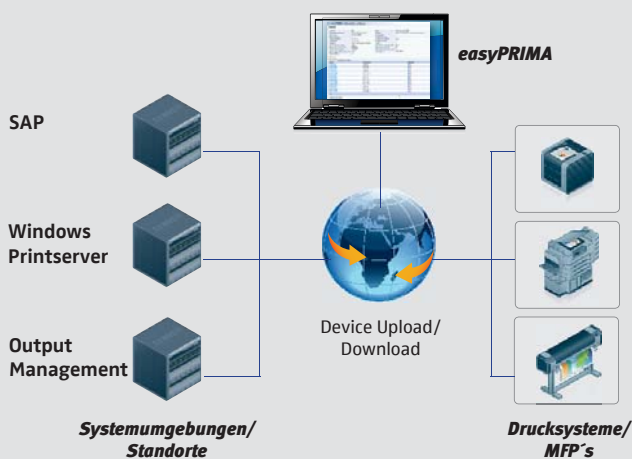
Overview of benefits

- ⊕ Single Point of Administration for all processes and devices
- ⊕ Reduced efforts for forms generation and management
- ⊕ Transparency from order status up to paper
- ⊕ Reduced hardware costs through software-based barcodes and Unicode support
- ⊕ Free selection of printers (any type, any vendor) and output channels
- ⊕ High availability of the complete print output
- ⊕ Faster print processes
- ⊕ Cost and benefit transparency of print infrastructure
- ⊕ Unified output management for SAP, Windows and the engineering sector
- ⊕ Higher user satisfaction through reliable, simple print processes
- ⊕ Relief for the User Helpdesk through stable print processes and a centralized monitoring and operation environment

PLOSSYS netdome – Important options

Central printer management: easyPRIMA

For environments with many printers administrated on different systems, there is an optimal solution: easyPRIMA is an enterprise-wide central database for definition and management of all output devices on different system



environments (Windows, SAP, Output Management) and at various locations. Key-users or local administrators can easily install printers themselves.

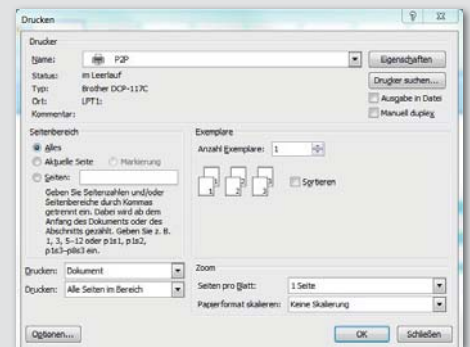
Using easyPRIMA reduces the average time for installation, change or deletion of an output device in any number of systems from 4 to 8 hours down to 5 to 15 minutes for each device.

SAP Spool Output (Business Printing)

The Business Printing Kit for SAP enables the central control and supervision of all print jobs from SAP through the standardized interface BC-XOM and PLOSSYS netdome. It enhances and optimizes the SAP standard print functions and provides continuous transparency of print output (including paper output) for users and administrators. By using generic processes, the complete SAP output can be device-independently processed. Efforts for forms generation and administration are significantly reduced. Furthermore, Business Printing offers a standardized interface for SAP to all output channels (print, fax, web, file [...]) and guarantees high availability as well as improved system reliability of SAP print output.

Windows Integration through SEAL MasterDriver

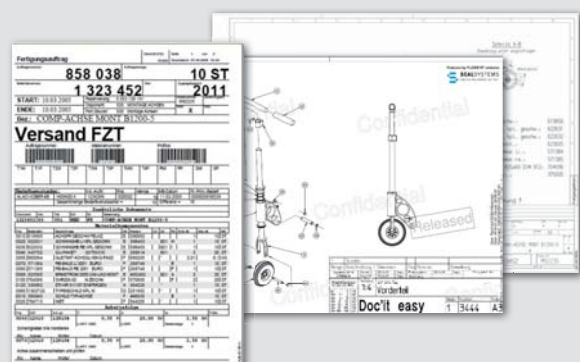
With the generic Windows driver "MasterDriver" from SEAL Systems almost all output devices in the enterprise can be optimally controlled. The application generates device-independent PostScript code, which is converted at the output management server into device-specific printer code. This method eliminates problems from recurring installing and de-installing of new drivers. In addition it is guaranteed; that the print image is identical on all connected devices, without the need of special adaptations. A unique property of MasterDriver as a generic driver is, that almost all device-specific print parameters of every device can be individually addressed independent from manufacturer, brand or model.



SAP Process Printing

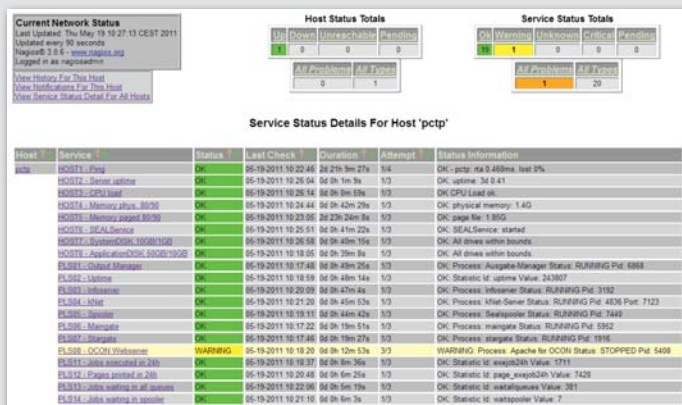
SAP process printing means: **All** documents of a business process, at the press of a button, in **one** package, directly from SAP.

All forms and documents of a process like production or purchase order are automatically collected, sorted and output at the right place immediately when the order is released.



System Monitoring Integration

In many companies printing belongs to the business critical processes. Through a breakdown of some printers or a malfunction of complete print processes deliveries can be delayed, production can be stopped or even plants may be switched off due to missing maintenance documents. In spite of fail-safe implementations sometimes there are device



errors or corrupt data can stop systems. Therefore PLOSSYS netdome can be integrated in separate system monitoring solutions. This enables the responsible system administrators to react in time and to prevent further system failures or to fix problems within short time. For the system monitoring data base of PLOSSYS netdome there is a standardized integration in the Nagios system. Other integrations are currently developed and can be prepared after request.

PLM Integrationen

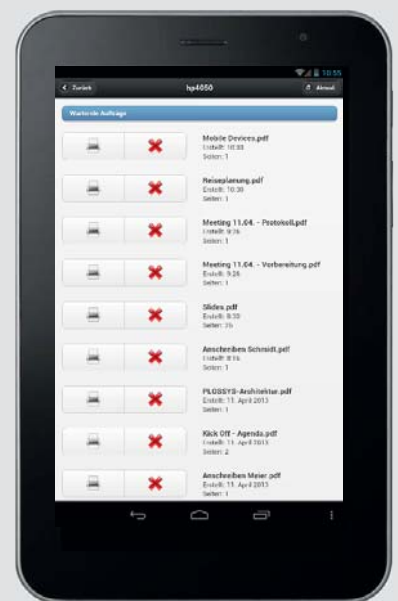
PLOSSYS netdome offers integrations for all leading PDM and PLM solutions, like Teamcenter, ENOVA MatrixOne, Windchill, SAP PLM [...]. The functionality is perfectly adjusted to the requirements of the engineering field:

- Process-oriented printing (see SAP Process Printing)
- Stamps and watermarks
- Large and oversize formats
- Rule-based job distribution
- Set collation
- Collection of documents
- Controlled distribution of bulk documents (Transmittals)
- [...]

Device-independent Secure & Pickup Printing ("Follow-me" printing)

Secure & Pickup Printing provides processes for secure, user controlled print output. After user identification at the device the output is started on the server. This guarantees confidentiality and avoids unnecessary output. A special feature of the Secure & Pickup Printing functionality of PLOSSYS netdome is **manufacturer and device independency for all devices in a company.**

With **PLOSSYS PickUp for mobile devices** the functions are available without any extensions on the printers. The printers get a barcode or an RFID tag. With PLOSSYS PickUp the barcode or the RFID tag is scanned at the printer, and then the printer is identified. The user then gets all his jobs from the PickUp queue displayed on the mobile device. Through selection of single jobs, these are directly output at the identified device.



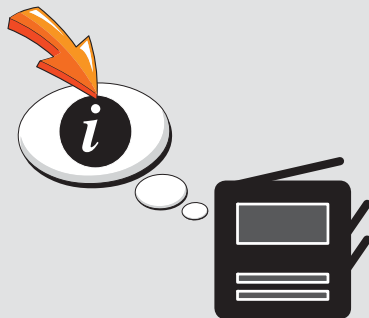
Electronic Distribution and Generation of Neutral Data

The electronic distribution of information is becoming increasingly important. Not only, because the paper flood and waste can be reduced, but also because information can be more quickly and efficiently sent to different recipients. Automatic distribution via email, automatic sending of telex, information distribution by a web portal or even the simple storage of information in a file system are examples for electronic distribution methods supported through PLOSSYS netdome. The information, ready for distribution, can be converted into neutral data formats like PDF, PDF/A, or TIFF as well as enhanced with digital signatures in order to provide a direct and secure information transfer to the recipient.

Further important options

Output Device Monitoring - Transparency from Application to Paper

Transparency of print processes from application to paper is a must for many users and administrators. This is not achievable with common print methods. Usually the printer only sends feedback about the successful transfer of data streams or send an error message. In order to truly report on the successful print of data streams or for early warning of upcoming error situations (for example low toner) communication is done by the PLOSSYS netdome Output Device Monitoring. Whereby configurable agents via SNMP can control not only the job status on the device, but can also get information about additional device conditions, which can be used for early warnings for system monitoring or for operating consoles. This enables the start of some substitute operations for pro-active Incident Management.



Forms Management

PLOSSYS netdome can be enhanced with a professional forms management. Besides a seamless SAP® Integration there are interfaces for easy connection of mainframe or web applications. The forms can be centrally or de-centrally edited and managed and are available for users according to settings in the rights management. Depending on the process and selected output channel, the correct layout is automatically chosen. The forms are **output identically on all printers**, with exactly the same look.

Data Archiving

Print jobs can be temporary archived within a configurable time and can be easily repeated or output again to a different device or output method. Some processes require long time archiving of the output information. For this the existing archive systems of our customers can be integrated. Index information can be automatically generated from the process itself. The data is archived in the origin output format (printer code) and/or converted as an image in PDF, PD-F/A or TIFF format, which meets the requirements of standardized long time archiving regulations.

System environment

System requirements

- Native Clients for Windows XP, Windows 7 and Linux (SUSE and Red Hat)
- Platform independent web clients
- Platform independent Integration via IPP, LPD, JPS and commandline clients

Supported server platforms

Windows and Linux (SUSE und Red Hat)

See all details for recommended computer equipment under www.sealsystems.com/service-support/computer-equipment/

Product code

PR-Server

More questions?



Tobias Habermann is the specialist for your questions around:

Output and distribution of documents – easy and transparent.



Tobias Habermann
Tel +49 9195 926 132
tobias.habermann@sealsystems.de



U.S.A./Canada/South America:
David Salamanek
Tel +1 865 380 0005
info@sealsystems.com

COMics, Ausgabe I



sealsystems.de/com

Are your administrators of print infrastructure looking like this?

No?

Then spend them **Corporate Output Management** with PLOSSYS®netdome.



SEAL SYSTEMS
THE DIGITAL PAPER FACTORY

E mail: info@sealsystems.com
Web: www.sealsystems.com

OUTPUT MANAGEMENT
CORPORATE SOLUTIONS BY SEAL SYSTEMS

We would be happy to answer your questions about PLOSSYS netdome and the possible applications in your company.

© 2017 SEAL Systems AG. PLOSSYS is a registered trademark of SEAL Systems AG. Other computer and software names mentioned in this brochure are trade names and/or trade marks of the respective manufacturers. Subject to change without notice.

Date: May 22, 2017 V100-201602-1-en