

## Case Study

# Bill of Material with ECTR integration at SwissOptic

In the following user reports you can read about ...

- ⊕ ... which challenges SwissOptic had to solve when issuing design and material BOMs.
- ⊕ ... how this issue was simplified and automated by the material BOM explosion of SEAL Systems.
- ⊕ ... what benefits the ECTR integration offers.
- ⊕ ... what other benefits SwissOptic has with this solution.



### The starting position

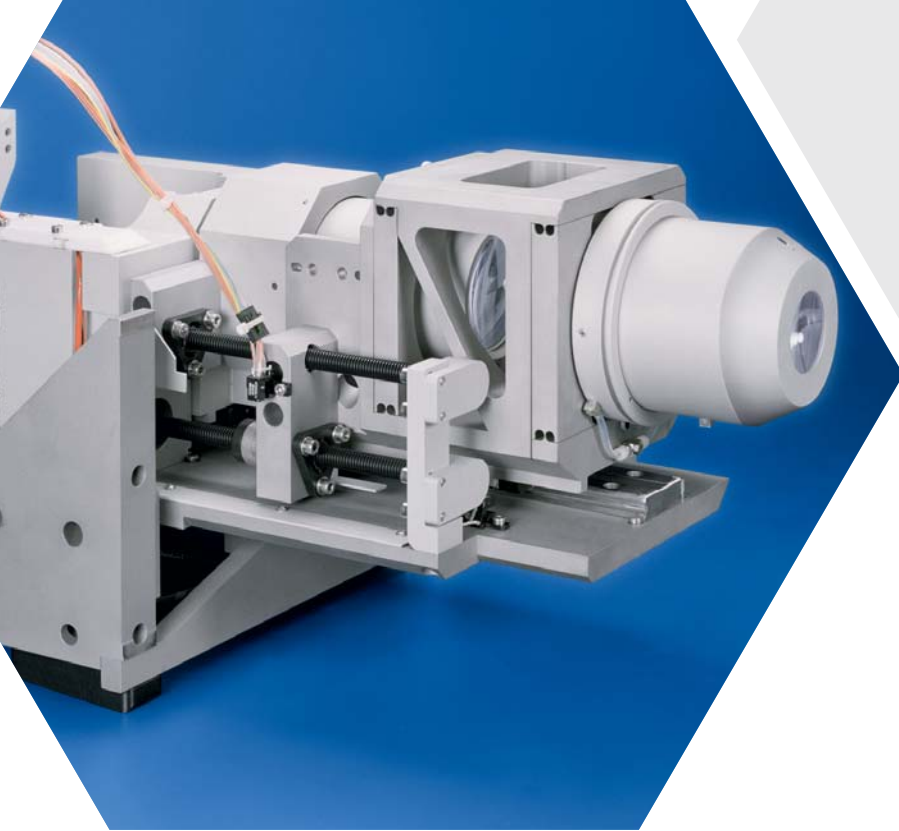
At the start, SwissOptic had no possibility to output documents from a design or material BOM from the SAP DMS standard. In the standard SAP, there is simply no way to output documents from a structure. Every single document must be searched for, opened in the viewer and printed out separately.

During the project, SwissOptic also introduced the SAP Engineering Control Center (ECTR). This resulted in the additional requirement to make the new SAP output processes introduced by SEAL Systems available not only in the standard SAP but also in the ECTR.

SwissOptic uses SAP ERP 6.0 as the ERP system. All documents are managed in the SAP DVS of SwissOptic. Additionally to storing the documents in SAP DMS, links were created between the document info record (DIS) and the material. The materials are in turn provided in material BOMs, which can consist of several levels and a variety of materials.

### The aim of the project

The aim of the project was to replace the error-prone, time-consuming and therefore cost-intensive process described above by automatically outputting the documents from the design or material BOM. By outputting all documents automatically in the correct order the costs should be reduced and process reliability increased.



The integration of the new output processes in the ECTR should ensure that the user can operate all functions from one interface, without having to change between ECTR and SAP to start the output of the documents.

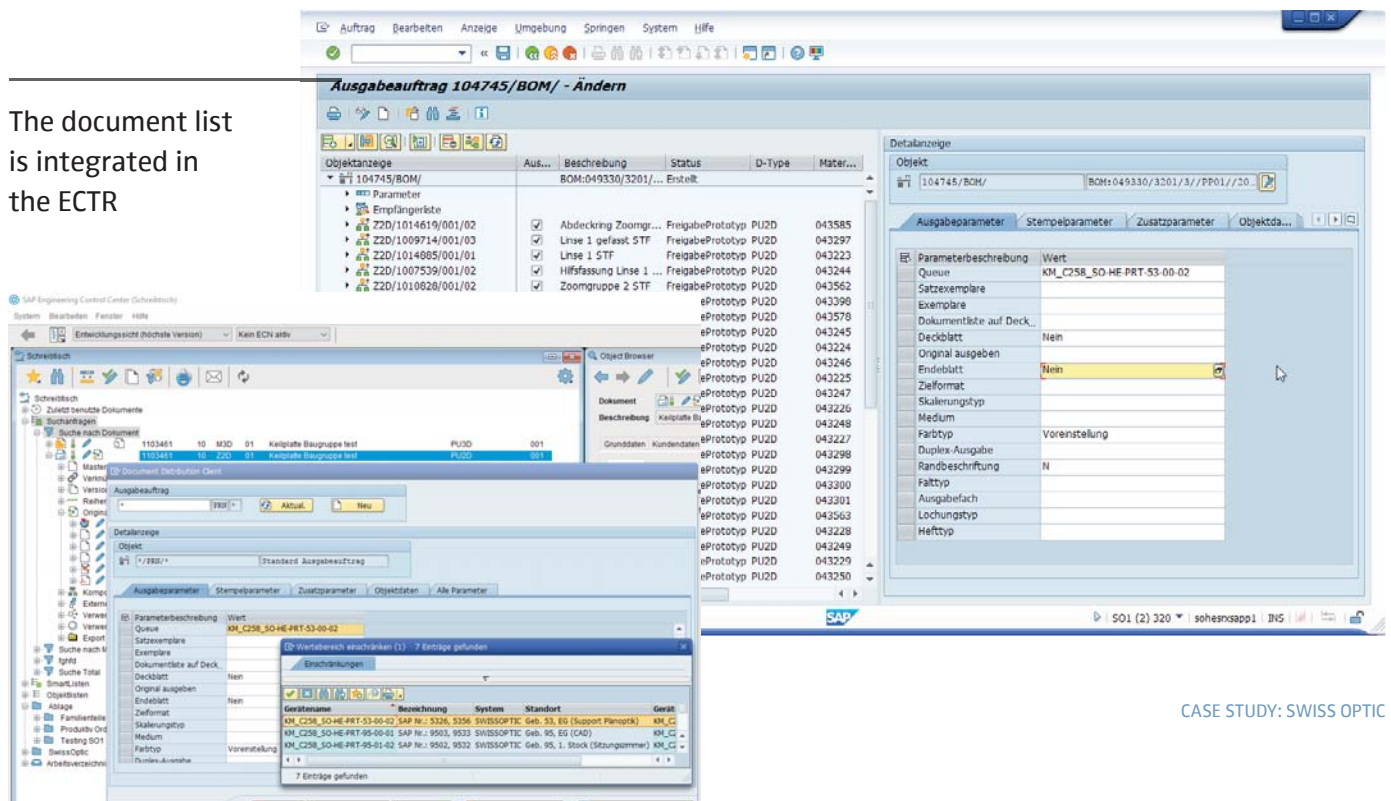
### The solution

The document determination is carried out in SAP. It searches for flexibly preset parameters in the BOM and finds all the documents that are linked to the materials at the different levels of the BOM. Then it adds them in order according to an output request.

At the customer's request, the output job can then be supplemented with further routing information (Who is printing? When?, etc.). Thus, a complete output job - consisting of the documents and the routing information - is available in SAP. This is transferred to the server-side components.

The server accepts the documents and steering information and starts the processing (stamping, scale, etc.). PDF and TIFF files are output on one of the Konica Minolta BizHub printers used by SwissOptic. The digital distribution via e-mail, file storage, or portal is possible for all file formats.

The document list is integrated in the ECTR



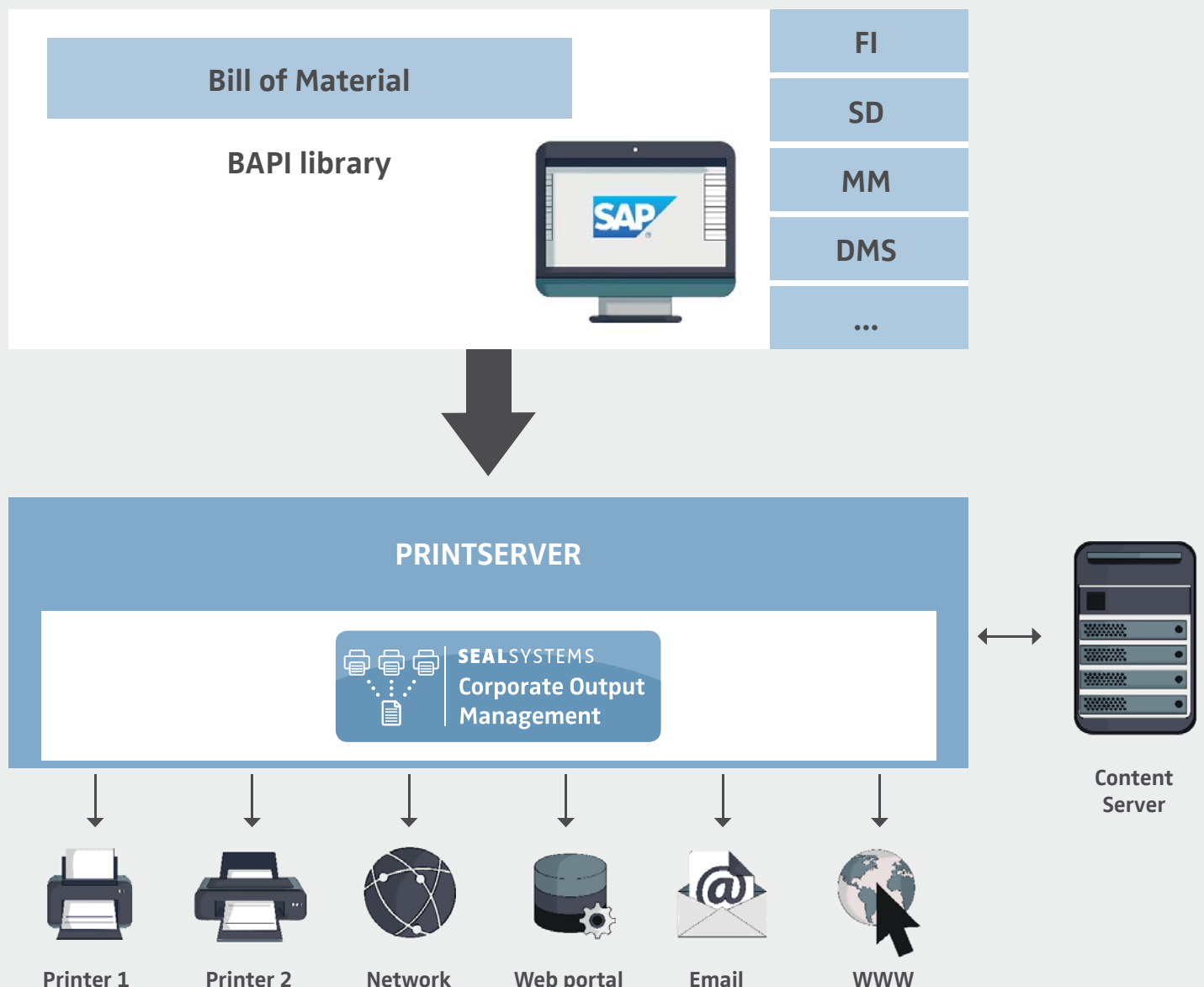
## SAP Engineering Control Center (ECTR)

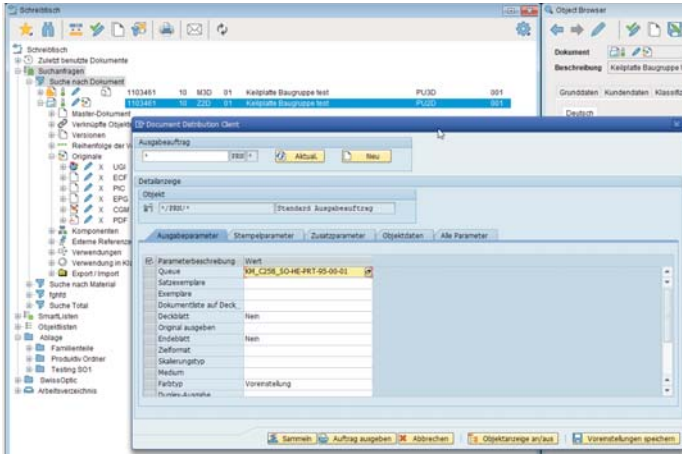
The SAP ECTR is an SAP cockpit, which represents the integration platform for different authoring tools to the SAP PLM. In addition, locally created product data can be centrally managed, structured and logically linked. For outputting material BOMs, the user no longer uses the SAP DMS, but the ECTR. This is the reason why the call of the SEAL processes was also set up for the ECTR. Likewise, the user can also view the SEAL Systems view and conversion processes in the ECTR.

## The benefits

- + No manual processes involved in locating the documents
- + Avoiding sources of error and media breaks; process safety is ensured
- + Save time and money by using batch operations
- + Always the right documents at the right place at the right time

## Solution architecture





Output parameter in the BOM output

## About SwissOptic AG

As a member of the Berliner Glas Group, SwissOptic AG represents globally recognized quality and highest precision in the world of optics. The headquarters of Swiss Optic AG are located in Heerbrugg, Switzerland. Another branch is in Wuhan, China. Swiss Optic AG develops and manufactures a wide range of coated precision optical components, assemblies and systems. Around 300 employees are employed there.



## Customer statement



*“With SEAL Systems, we have finally found a software company with professional know-how in process optimization and output management. During the project work, we realized quite quickly that the staff of SEAL Systems work absolutely professionally and that the software works perfectly.”*

Dr. Clau Maissen, Development Manager at SwissOptic

## Contact

Do you have any questions on this topic?

Matthias Müller,  
New Business,  
would be happy to help you!

Tel.: +49 9195 926 102  
matthias.mueller@sealsystems.de



**SEALSYSTEMS**  
THE DIGITAL PAPER FACTORY

www.sealsystems.com

Tel. +49 9195 926-0 | Fax +49 9195 1739

© 2018 SEAL Systems. All used computer and software names mentioned in this brochure are trade names and/or trade marks of the respective manufacturers. Subject to change without notice. Date: February 2018.