

FACTSHEET

Windows® Printing Kit and Master Driver

Printing in Windows, Citrix,
Terminal server environments

What is the Windows Printing Kit?

The Windows Printing Kit is the optimization of the Windows print output via a central output management system and a generic driver for all output channels (print, plot, electronic).



● Introduction

Your advantages

The basic functions

Important options

Contact

What does the Windows Printing Kit do?

The Windows Printing Kit reduces the administration effort for Windows-related print infrastructure and processes and ensures transparency of all print processes for users and administrators. The consolidation of the driver landscape into a single, generic printer driver with optimized device control stabilizes the print output. With the Windows Printing Kit for our output management engine PLOSSYS, you can also create fail-safe print output (load balancing & failover) and data security (encrypted data transfer, secure & pickup printing). An identical print image on all output devices is always guaranteed. Finally, the operation (then redundant) of a Windows print server can be dispensed with, as the Windows print output can be optimally handled via PLOSSYS.

● Introduction

Your advantages

The basic functions

Important options

Contact

Who needs Windows Printing Kit?

- ⊕ Any company that wants to lower the cost of print output and infrastructure management on Windows.
- ⊕ Any administrator who is currently busy with driver management and troubleshooting.
- ⊕ Every user for whom smooth and easy printing from Windows is an important basis for work.

● Introduction

Your advantages

The basic functions

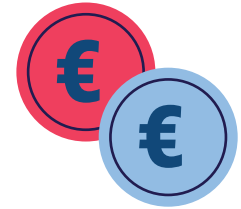
Important options

Contact

The advantages of Windows Printing Kit are ...

+ High efficiency

- Reduced administration effort due to generic driver, robust processes and central control and monitoring console (support effort, hardware costs, user helpdesk costs)
- Reduced system administration overhead through simple, centralized setup and automatic distribution of output devices
- Paper avoidance through electronic distribution processes and Secure & PickUp Printing
- Reduced opportunity costs through free choice in hardware procurement
- One server for all corporate expenses by eliminating redundant print server structures (Windows print server)



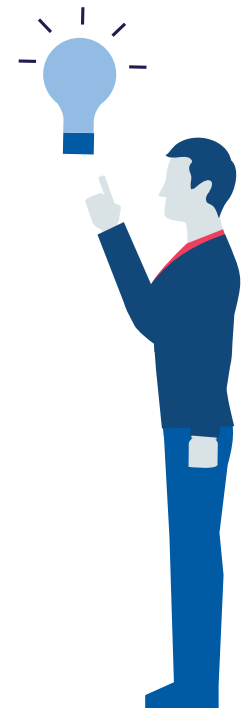
- Transparency of costs and throughput through central accounting for optimal device procurement
- Robuste Sicherheitstechnik, um Angreifern das Leben schwer zu machen.

+ System availability

- Failover concepts guarantee high availability of printing processes
- Scalable throughput through load balancing
- Automatic reactions in case of error reduce downtimes and support costs
- Optimum control of all devices via the MasterDriver from SEAL Systems eliminates error potential

+ User satisfaction

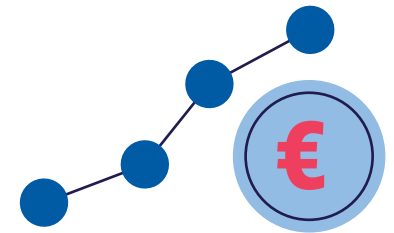
- Transparency of print output and job tracking options for users and administrators right down to the paper in the tray increase satisfaction and reduce helpdesk costs



- High system availability and reliability
- Working in a familiar environment through Microsoft-certified product

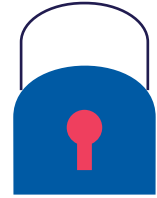
+ Investment security

- Device-neutral print data preparation enables easy integration of new output hardware
- Free choice in the procurement of your equipment fleet / optimal negotiating position in the selection of your hardware suppliers
- Modular system architecture can always be adapted to the requirements of your company
- Investment protection through Microsoft certified, market leading product



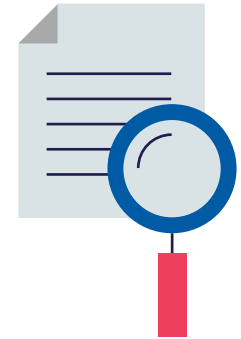
+ Data and system security

- Encrypted transmission of all print data company-wide
- Confidentiality remains confidential with Secure & PickUp Printing (FollowMe printing)
- Extensive user and rights management



+ Cost and throughput transparency

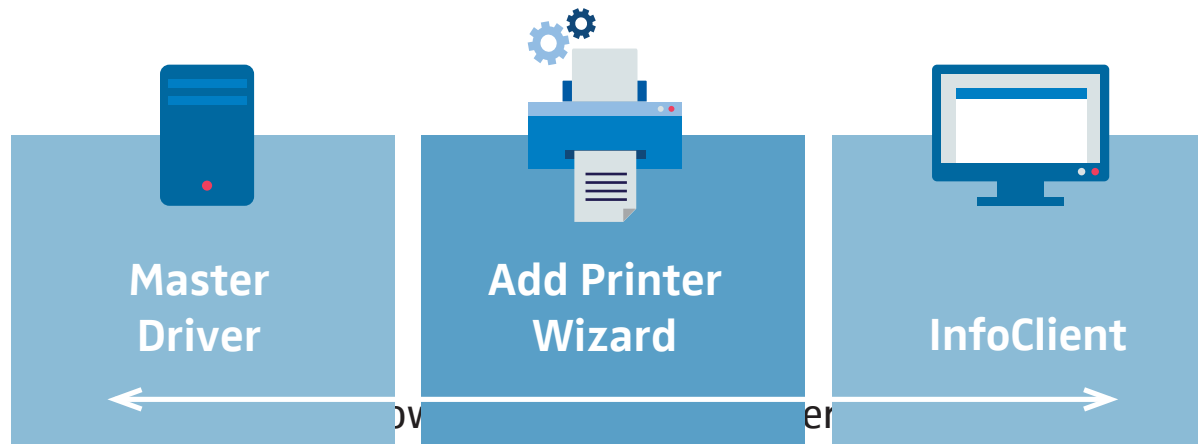
- Central accounting of all important output information
- Cost center or project assignment
- Area- and device-specific evaluations



Windows Printing Kit – Basic functions

SEAL Systems MasterDriver: One for all

The Windows Printing Kit can be easily customized to meet your specific needs. It can be used as an MSI package distributed to the client systems via the software distribution. In addition, configurations can be easily adapted via the SEAL printer management easyPRIMA. The Windows Printing Kit can be operated via the output management PLOSSYS both on-premise and in the cloud (private, public, hybrid).



Introduction

Your advantages

The basic functions

Important options

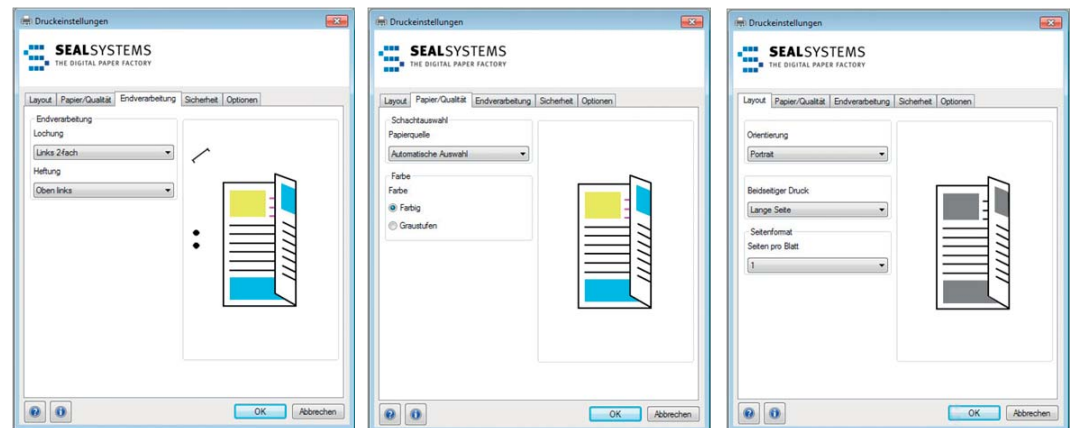
Contact

almost all output devices in the company can be optimally controlled. The application generates device-neutral Postscript code, which is converted into device-specific printer languages on the Output Management Server.

Of course we work with the most common operating systems (Windows 8, Windows 10).



This integration process eliminates all the problems associated with regularly installing and uninstalling new drivers. In addition, it can be guaranteed that the print image is identical on all connected devices without the need for specific adjustments. A unique feature of the MasterDriver as a standard driver is that almost all device-specific print parameters can be individually controlled for each device (manufacturer-independent). Various extensions (e.g. for overlengths up to >10m) guarantee the suitability of the MasterDriver for every application in the company.



With our Windows MasterDriver you can see the selected print parameters at any time

Ideal for terminal server environments and home office connectivity

The use of the MasterDriver leads to increased system stability, especially in Windows terminal server environments. The Local Print Adapter (LPA) can also be used to connect any printer from home office workstations to the central output management without having to install its drivers on the central terminal servers. The network load is reduced by special compression procedures during the transfer of the print data to the user workstation.

Introduction

Your advantages

The basic functions

Important options

Contact

User Self Service: InfoClient

Via the InfoClient, the user can only track his own print jobs and thus obtain an up-to-date overview of the processed output. The Icon Tray is a small piece of information, details can be traced via a web frontend (website). The login to the InfoClient is done via single-sign-on.

The screenshot displays the PLOSSYS netdome Infoclient web interface. The main window shows a list of print jobs with columns for Auftrag, Auftragsnummer, Auftragsstatus, Ausgabegerät, Benutzer, Position, Seiten, and Ausgabezeit. The status column uses color coding: green for 'BEREIT' (ready), yellow for 'WARTET' (waiting), and red for 'WARTET AUF SATZ' (waiting for paper). A notification window in the foreground shows a log of print events, including document arrivals and printer status changes.

Auftrag	Auftragsnummer	Auftragsstatus	Ausgabegerät	Benutzer	Position	Seiten	Ausgabezeit	Aktionen
PDF DIN A3 quer	81019	BEREIT	hp4600	ga_localadmin		1	12.06.2019 09:09:49	
TIFF DIN A4 hoch	81020	BEREIT	hp4600	ga_localadmin		1	12.06.2019 09:09:49	
PDF ANSI A hoch	81016	WARTET	tiffout	ga_localadmin	1	1	12.06.2019 09:07:51	
HP-GL2 HP RTL A	81017	WARTET	tiffout	ga_localadmin	2	1	12.06.2019 09:07:51	
TIFF ANSI A hoch	81018	WARTET	tiffout	ga_localadmin	3	1	12.06.2019 09:07:51	
PDF DIN A4 hoch	81012	BEREIT	pdfout1	ga_localadmin		1	12.06.2019 08:57:03	
TIFF DIN A4 hoch	81013	BEREIT	pdfout1	ga_localadmin		1	12.06.2019 08:57:03	
HP-GL2 HP RTL D	81015	BEREIT	pdfout1	ga_localadmin		1	12.06.2019 08:57:03	
PDF DIN A4 hoch	81011	BEREIT	pdfout1	ga_localadmin		1	12.06.2019 08:57:03	
PDF ANSI A hoch	81003	BEREIT	pdfout1	ga_localadmin		1	19.03.20	
TIFF DIN A3 quer	81001	BEREIT	pdfout1	ga_localadmin		1	19.03.20	
PDF ANSI A hoch	81002	WARTET	pickup	ga_localadmin	7330	1	19.03.20	
Riesensatz_b47	80498	WARTET AUF SATZ	pdfout	gabiv		515	11.03.20	
Riesensatz_b46	80395	WARTET AUF SATZ	pdfout	gabiv		105	11.03.20	
Riesensatz_b45	80293	WARTET AUF SATZ	pdfout	gabiv		103	11.03.20	
Riesensatz_b44	80191	WARTET AUF SATZ	pdfout	gabiv		103	11.03.20	
Riesensatz_b333	80084	WARTET AUF SATZ	pdfout	gabiv		105	11.03.20	
Riesensatz_b3	79341	WARTET AUF SATZ	pdfout	gabiv		105	11.03.20	
Riesensatz_b2	79234	WARTET AUF SATZ	pdfout	gabiv		105	11.03.20	

Notification Window Log:

- 08:57 Document 'HP-GL/2 HP RTL DIN A4 hoch' has been printed on printer 'pdfout1'.
- 08:57 Document 'TIFF DIN A4 hoch' has been printed on printer 'pdfout1'.
- 09:07 Document 'PDF ANSI A hoch' arrived for printer 'tiffout'.
- 09:07 Printer 'tiffout' is stopped.
- 09:07 Document 'TIFF ANSI A hoch' arrived for printer 'tiffout'.
- 09:07 Printer 'tiffout' is stopped.
- 09:07 Document 'HP-GL/2 HP RTL ANSI A hoch' arrived for printer 'tiffout'.
- 09:07 Printer 'tiffout' is stopped.
- 09:09 Document 'TIFF DIN A4 hoch' arrived for printer 'hp4600'.
- 09:09 Document 'PDF DIN A3 quer' arrived for printer 'hp4600'.
- 09:10 Document 'PDF DIN A3 quer' has been printed on printer 'hp4600'.
- 09:10 Document 'TIFF DIN A4 hoch' has been printed on printer 'hp4600'.

Introduction

Your advantages

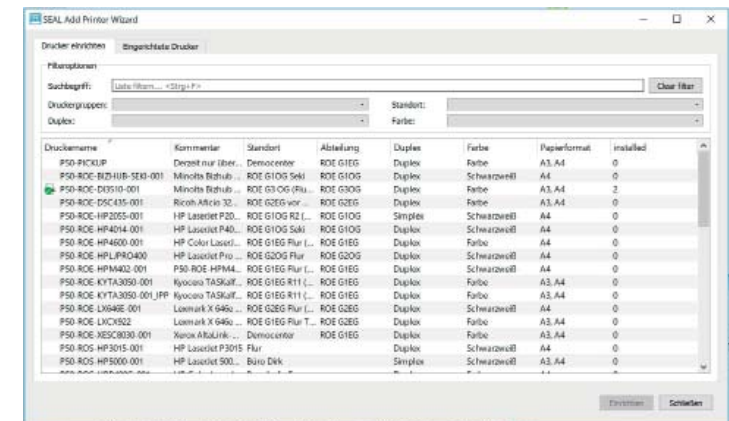
The basic functions

Important options

Contact

User Self Service: Add Printer Wizard (APW)

The „Add Printer Wizard“, the user self-service during device setup, makes daily operation easier for users and administrators. It enables all devices connected to PLOSSYS to be set up directly at the workstation. The device selection is intuitive and easy to operate and has multi-stage filters (e.g. location, building, corridor). Additional options for device selection can be flexibly configured. Newly created queues are immediately offered in the Add Printer Wizard. Queues deleted on the server are automatically removed from the workstations. Direct communication between the Add Printer Wizard and the Output Management Server means that you no longer need a Windows print server.



Introduction

Your advantages

The basic functions

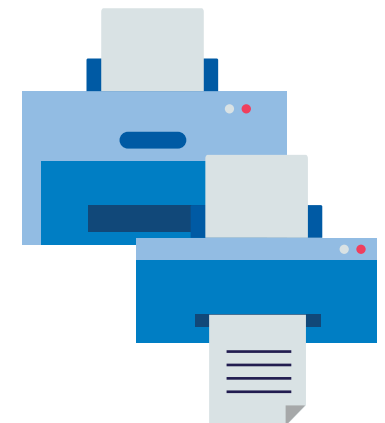
Important options

Contact

Windows Printing Kit – Important options

Secure & PickUp Printing

Secure&Pickup Printing (SPP) is also known as Pull Printing or Follow Me Printing. Users print to a virtual target device or the Secure & PickUp Printing Queue on the Output Management Server. The user then goes to any network printer and authenticates himself (e.g. via PIN entry, his employee card or other procedures) and triggers the print output. Alternatively, users can use a smartphone or tablet PC to scan a barcode on the device to trigger printing. In addition to ensuring the confidentiality of printed documents, there are significant savings in paper consumption (up to 40% of printouts are not collected by departmental printers) and positive effects on the environmental balance of printing (fewer „private“ workplace printers required, less paper and toner consumption). The Secure & PickUp Printing option for the Windows Printing Kit is device-neutral, i.e. for all device manufacturers and types, and is easy to implement. Only one spool service (PLOSSYS) is in use company-wide.



Introduction

Your advantages

The basic functions

● Important options

Contact

Printer management and fleet management

If printers are to be managed efficiently on several systems, there is an optimal solution: easyPRIMA is a company-wide, central database for defining and managing all output devices on different system environments (Windows, SAP, Output Management) and at different locations. Key users or local administrators can easily set up their own printers. The use of easyPRIMA significantly reduces the average time required to set up, change or delete an output device in any number of systems.

With the integrated fleet management of SEAL System you can trace all technical and commercial data of every single printer in real time. Consumption and meter readings are displayed visually. Using the real-time data, you can define alarm statuses and derive workflows from them, e.g. to reorder toner or to inform the IT department of malfunctions. In addition, the printers are managed in an asset management system with special data such as the date of purchase or lease, and much more.

Introduction

Your advantages

The basic functions

● Important options

Contact

Basic functions

- + Generic PostScript driver
- + Available for all Windows platforms
- + All standard print functions of Windows available
- + Support of all common standard paper sizes (DIN, ANSI)
- + Support of wild formats
- + Support of large formats and oversizes (>10m)
- + Automatic format recognition for CAD printing
- + Individual support of all device-specific printer parameters (finishing, layout, roll/tray control, duplex etc.)
- + Optimized recognition of document orientation (important for control of roll and trays control and for finishing options mainly with large format printing)

System requirements

PLOSSYS, easyPrima

Introduction

Your advantages

The basic functions

● Important options

Contact

Installation

Via MSI-Paket

centrally on the server

locally on client work places (also with software distribution)

Windows platforms

Windows XP, 7, 8 10

2003 Server, 2008-R2 Server, 2012 Server, 2016 Server

32 and 64 Bit

Product code

NWPR

Introduction

Your advantages

The basic functions

● Important options

Contact

Are you interested?

Contact us! We are happy to answer your questions concerning Windows Printing Kit.

Europe/Asia/Australia

André Schnibbe

andre.schnibbe@sealsystems.de

Tel +49 9195-926-137



USA/Canada/Americas

Debra Garls

debra.garls@sealsystems.com

Tel +1 774 200 0933





www.sealsystems.com

info@sealsystems.com

Follow us:



Further actual information
on our blog:

www.sealsystems.com/blog

© 2019 SEAL Systems. PLOSSYS is a registered trademark of SEAL Systems AG. Other computer and software names mentioned in this brochure are trademarks and/or service marks of their respective owners. Subject to change without notice.