

# PLOSSYS® netdome

## Stamps and Watermarks



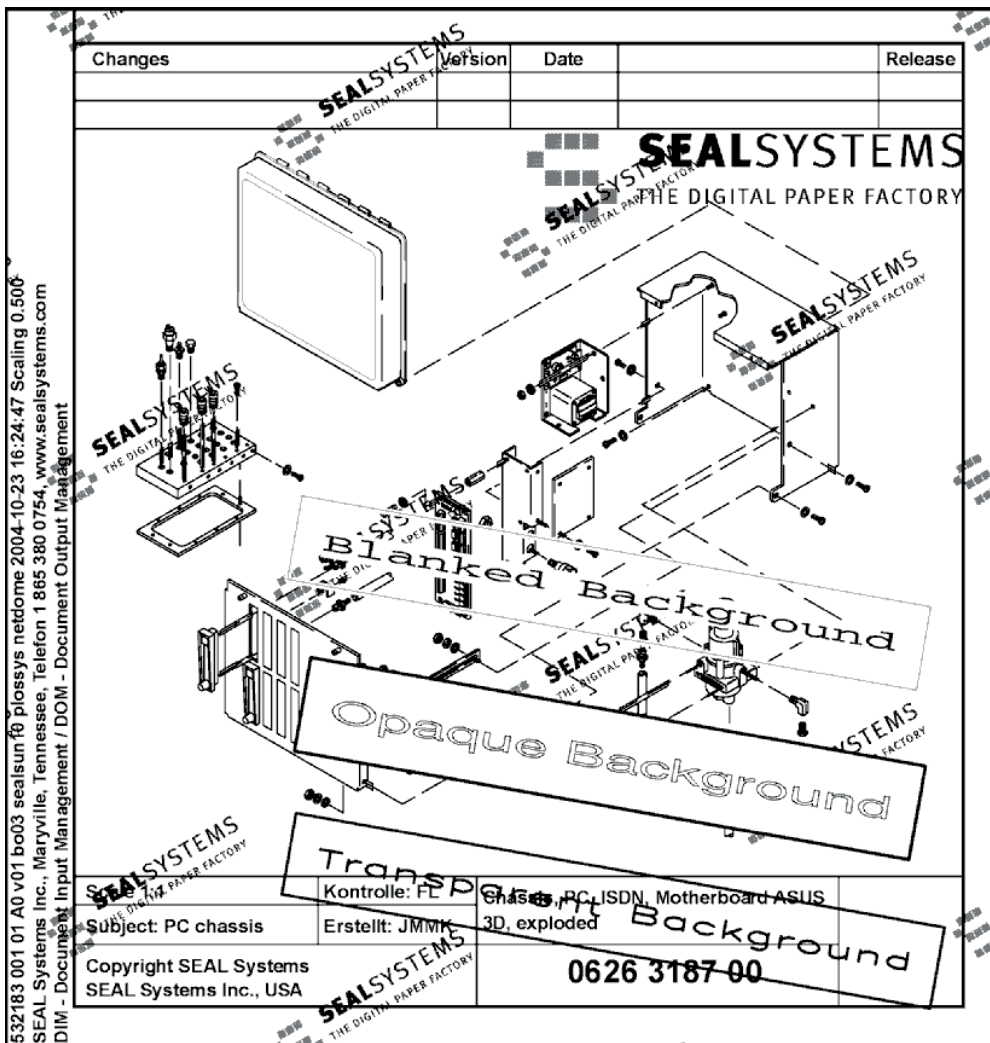
Stamps and watermarks are text or graphic elements providing additional markings for document information during output. Watermarks are dynamically placed below document content and Stamps are placed above the document content.



The user can determine the form, orientation and position of the applied stamps or the watermarks. As an added benefit, the text field of a stamp can be filled the moment before output occurs with the PLOSSYS header entry tool. The appearance of a stamp can be controlled this way as well.

## Usage

Status information from drawings, including CAD systems or digital archives, can be printed in a well visible position at the moment of output. This insures safer and more transparent document output.



### Stamps and Watermarks

Stamps can be configured in various ways including font, color, location and more. Document stamping converts the document content into a dynamic stamp placed above the document text. Watermarks are placed in the background of the document without hiding the document content.

The automatic or controlled placement of document Meta Data as stamps and watermarks enhances process security.

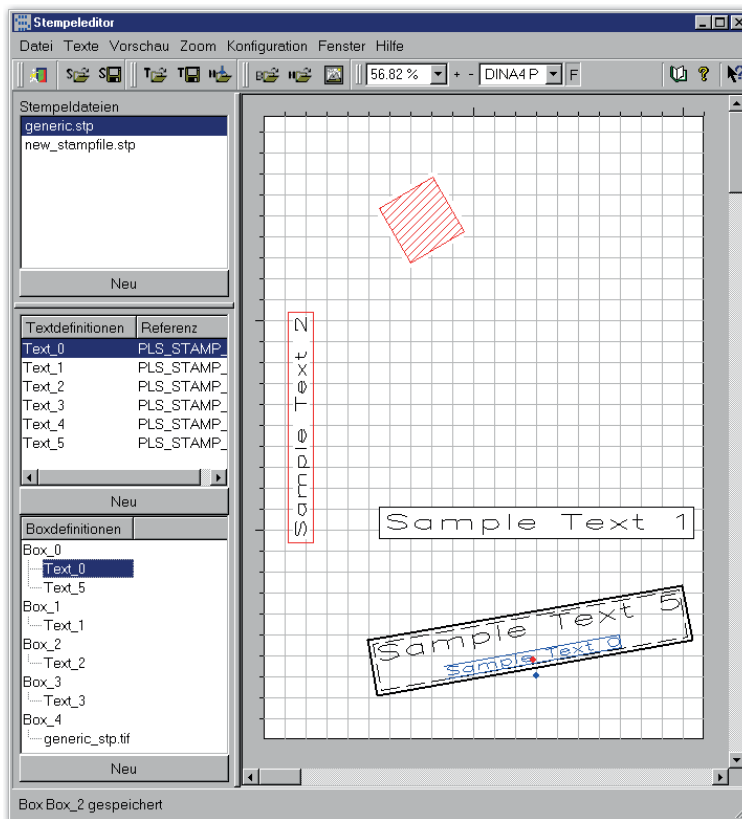
## Editor

For simple creation and efficient editing of stamp layouts, an editor is delivered with the following features:

- Stamp preview
- Stamp configuration: Loading, copying, changing, storing
- Stamp positions
- Setting of pattern text
- Display and change of layout definitions: Text layout, box layout, color definitions
- Configuration of the stamp editor
- Able for run on each Windows workstation

This tool provides mapping, maintenance and editing of stamp layouts faster and easier, eliminating the need for costly settings and control prints.

**Editor** →  
Simple creation and configuration of stamps and watermarks without adjusting control and print processes.



## Configurable Parameters

### Text attributes

- Font size
- Color
- Text alignment (centered, left or right aligned)
- Font line width
- Font type, selection out of over 50 font type styles
- Character separation and extension
- Mirrored texts
- Default texts

### Stamp and Watermark attributes:

- Position and size
- Angle of the stamp/watermark
- Drawing a frame (yes/no)
- Color of the frame
- Rotate stamps/watermarks with the drawing
- Scale stamps/watermarks with the drawing
- Definition of the content via metafiles (graphic)
- Deletion of the background of a stamp or only showing the background of the text
- Repeated output of a stamp or watermark over the whole drawing is possible through line or column
- Unicode capable

### System Environment

PLOSSYS® netdome

### Product Code

Z-STP

## Contact

We would be glad to answer your questions around stamps and watermarks with PLOSSYS netdome. We can inform you of the possibilities and potential use in your company.

### SEAL Systems

Email: [info@sealsystems.com](mailto:info@sealsystems.com)

Web: [www.sealsystems.com](http://www.sealsystems.com)

