

## FACTSHEET

# Documents for Sales Processes

## Customer Order, Delivery, Invoice



### What is DOC4SD?

The DOC4SD modules enable the output of documents for sales orders as well as the automatic retrieval and output of relevant sales documents with the SEAL Systems document output management solution.

By connecting the output program with the output of sales processes, the relevant documents can be printed with the linked drawings in correct sequence, as a single job. This method supports the processes for sales orders (SDD), delivery (OBD) and invoices (BIL).



### What can DOC4SD do?

The document output can be done manually through an appropriate Transaction or automatically with integration into the print programs of the respective processes.

Selection controls and configuration provide extensive retrieval of relevant document and material attachments. Several methods for assignment, identification and selection of documents are supported. The output is either done automatically with preconfigured, standardized methods or after manual selection from a list of retrieved documents.



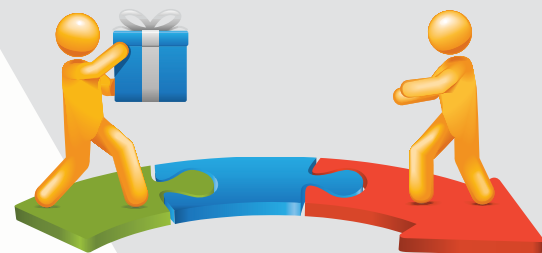
### Who needs DOC4SD?

All sales agents who have to:

- Provide **additional documents** for a production order.
- **Seamlessly track** the shipping of documents.
- **Avoid manual effort** through automated output.
- Prepare and send sales orders to various recipients.

## Advantages

- ⊕ Full integration into SAP business processes and applications.
- ⊕ Reduced manual effort with single click functionality.
- ⊕ Full restructured bill of materials.
- ⊕ Stamping and watermarking Table of contents page with structured documents.
- ⊕ Banner and end pages make it easier for recipients.
- ⊕ Everybody gets his documents in the simplest form, eg. on paper, by email or telefax.
- ⊕ Also technical files are supported, for example CAD data, which can be sent.



## Automatic Identification of Assigned Documents to a Customer Order ...

### Supported Document Types

- Forms (SAPScript, SmartForm, AdobeForm).
- DMS documents linked to any object, like material master, bill of materials and bill of materials positions.
- DMS structures and document hierarchy.
- Documents linked through Archive Link.
- Attachments through Services for Objects (GOS/BDS).

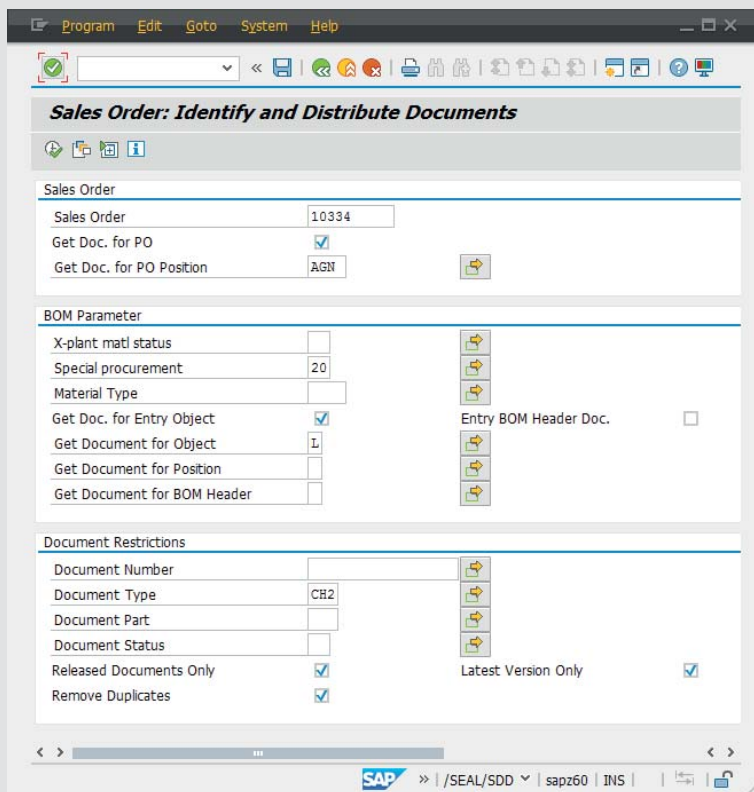
### Integration

- As a single Transaction with interactive input.
- Embedding into the SAP message control system.
- Integration in SAP PLM 7 or earlier versions.
- Optional integration into SAP print programs for automated output functionality.

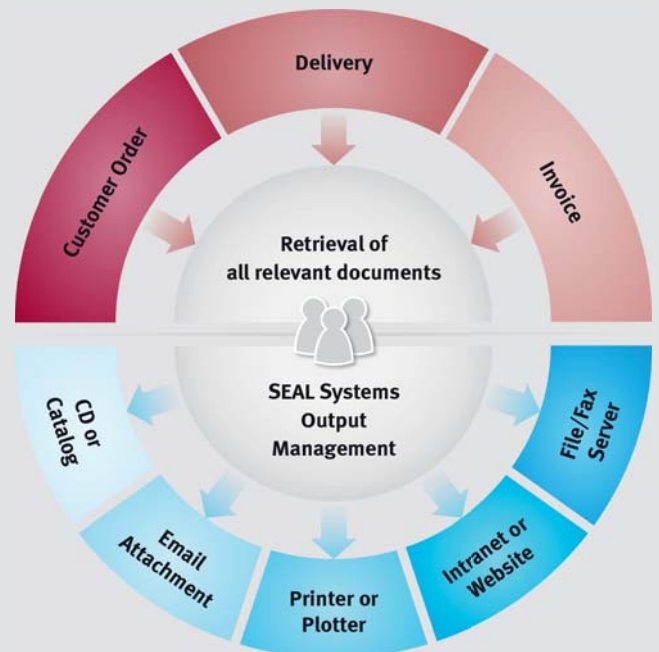
### Selection Criteria for Documents

A number of filters can be used for the retrieval of documents pertaining to a customer order, including

- Document type
- Document status
- Latest version
- Only released documents
- Remove duplicates
- Document features
- Supplier-specific selection
- Additional filter criteria



The transaction SEAL/SDD for retrieval of customer order documents.



Collection and distribution of sales documents.

# Documents for Sales Processes (DOC4SD)

## Output

Mail sending can be done directly to the recipient or indirectly via sales agent.

## Configurable User Exits

Additional user exit options bring further enhancement to address any functional requirements or legacy operations.

## Logging

If the collection of documents is integrated in the SAP message control system, then message logging provides information about the process status.

Alternatively, process logging can be done with SAP application logging using configurable settings.

**SAP® Certified**  
Integration with SAP Applications

The image shows two SAP screenshots. The left screenshot is titled "Change Standard Order 10334: Overview" and displays order details such as "Standard Order 10334", "Net value 1.155.000,00 EUR", and "Sold-to party 2300". The right screenshot is titled "Output job 1966/SDD/ - Display" and shows a tree view of documents and metadata for the order, including "Parameters", "Receiver List", "SDD 10334-", and "CH2/1000000269/000/00".

| Item | Material   | Order Quantity | Un    | Description       | S |
|------|------------|----------------|-------|-------------------|---|
|      | 101400-300 |                | 77 PC | SunFun / 1200 cm3 |   |

| Object View                    | Out...                              | Description         |
|--------------------------------|-------------------------------------|---------------------|
| 1966/SDD/                      |                                     | SDD:10334/000000... |
| Parameters                     |                                     |                     |
| Receiver List                  |                                     |                     |
| SDD 10334-                     | <input checked="" type="checkbox"/> | SDD 10334-          |
| CH2/1000000269/000/00          | <input checked="" type="checkbox"/> | Scooter             |
| Parameters                     |                                     |                     |
| 3443.pdf                       | <input checked="" type="checkbox"/> | Acrobat Reader      |
| 3443.hpgl                      | <input type="checkbox"/>            | HPGL View           |
| BOM-3443.doc                   | <input type="checkbox"/>            | Word for Windows    |
| Pruefplan-3443.doc             | <input type="checkbox"/>            | Word for Windows    |
| Produktstruktur 3443 rot90.pdf | <input checked="" type="checkbox"/> | Acrobat Reader      |
| 3443.jpg                       | <input type="checkbox"/>            | Bild                |

Standard SAP transaction VA02 for customer orders

Customer order with all relevant documents and metadata on one output job

# Documents for Sales Processes (DOC4SD)

## Installation

SAP System:

Installation is done through SAP Transports. The basic customization is done with the press of a button using BC Sets.

External Server:

The output system is installed by SEAL Systems.

## Language Support

The product is fully Unicode-compatible and available in English, German, French and Norwegian.

Additional languages can be supplied upon request.

## Scope of Delivery

Software is delivered as SAP Transports. Detailed documentation (PDF) in English and German with practice examples is provided.

Output system for external server.

## Product Code

SP-SD (Sales Distribution)

## System Requirements

SAP versions 4.7 or higher up to actual ECC 6.0 Enhancement Package including PLM 7.

Windows or Linux as server platform with hardware according to requirements.

See all details for recommended computer equipment under [www.sealsystems.com/computer-equipment/](http://www.sealsystems.com/computer-equipment/)

## Related Products and Options

- SP-PUR (Purchase Orders, RFQ)
- SP-PM (Plant Maintenance)
- SP-PRO (Production)
- SP-PS (Project System)
- SP-MM (Materials Management)



Adalbert Nübling and Debra Garls are specialist for your questions concerning:

*Provision and distribution of documents – Without any disadvantages*



**Europe/Asia/Australia**

Adalbert Nübling  
Tel +49 (9195) 926 120  
[adalbert.nuebling@sealsystems.de](mailto:adalbert.nuebling@sealsystems.de)



**USA/Canada/Americas**

Debra Garls  
Tel +1 774 200 0933  
[debra.garls@sealsystems.com](mailto:debra.garls@sealsystems.com)

**SEALSYSTEMS**  
THE DIGITAL PAPER FACTORY

**OUTPUT MANAGEMENT**  
CORPORATE SOLUTIONS BY SEAL SYSTEMS

**Solutions for SAP®**  
by SEAL Systems

Email: [info@sealsystems.com](mailto:info@sealsystems.com)  
Web: [www.sealsystems.de](http://www.sealsystems.de)

We would be happy to answer your questions around the generation of documents from SAP and show you the possibilities for your company.

© 2019 SEAL Systems AG. PLOSSYS is a registered trademark of SEAL Systems AG. Other computer and software names mentioned in this brochure are trade names and/or trademarks of the respective manufacturers. Subject to change without notice. Date: January 23, 2019  
V244-20130304-0-en