

FACTSHEET

DMS Loader

Loading Methods for SAP®



What are "Loading Methods for SAP"?

With SEAL Systems loading methods, data and files can be safely imported from external systems into the SAP document management system. During the loading process configurable checks, additions, and settings can be done.



What can "Loading Methods for SAP" do?

With Loading Methods external documents are stored in the SAP system at the correct positions with all necessary accompanying information. Loading Methods for SAP supports **SAP DMS** and **SAP Folders Management** with records, cases, and direct attachments to SAP objects (via **ArchiveLink**).

Upon import of data, the target objects can be newly configured or changed. In addition extensive additional information can be set and SAP links can be created. For DMS Loader, materials and bill of materials can be created. For creation of documents, templates can be used.

The Loading methods are efficient, widely configurable and offer extensions for customer-specific evaluations and actions. Configurable feedback messages and control mechanisms enable a gapless tracking of the loading process.



Who needs "Loading Methods for SAP"?

Every company who has to ...

- automatically load documents from external sources into the SAP system in a quick and reliable way.
- build up an SAP system with bootstrap loading or have to migrate existing archive solutions
- actualize meta data from external systems in SAP or embed documents and data into its own business processes

Advantages

- ⊕ Simple realization of mass imports
- ⊕ Tracking and correction of the import process
- ⊕ Continuous process chain for automatic actualization methods
- ⊕ Support of company-specific SAP rules and additional data
- ⊕ Test mode, including evaluation and logging



Fast, reliable and efficient loading of external documents into SAP systems ...

The loading process can be initiated in three ways:

- **Interactively with SAP GUI:** For unusual manual loading processes or tests.
- **RFC operation for external calls:** For scripted solutions and automated connections to external systems.
- **SAP background processing:** For large loading processes like bootstrap loading or migrations.

Objects

SAP DMS:

Document information sets and document bill of materials can be generated and changed. Also ACL document authorizations are supported.

- **SAP ArchiveLink:**
ArchiveLink documents are created and linked.
- **SAP Folders Management:** Records, cases and folders management services can be generated or changed.

Object Linking

SAP DMS:

DMS documents can be linked to almost 50 different SAP objects.

- **SAP ArchiveLink:**
ArchiveLink documents can be linked to any SAP Business Objects as attachment.
- **SAP Folders Management:**
Documents can be embedded into records and cases or can be generated as new FM document.

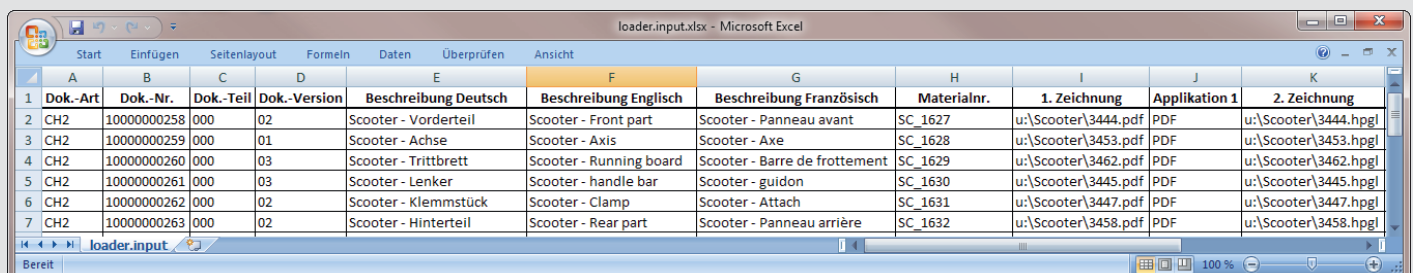
Job Files

Jobfiles for the loading process can be generated in Microsoft® Excel or as CSV file.

The structure is completely configurable. It can contain key information (for example a DIS key, Business Object for ArchiveLink connection) and further configurable data. Complex loading processes can be started, especially in the DMS environment, which use data of type, status, short or long text, and more.

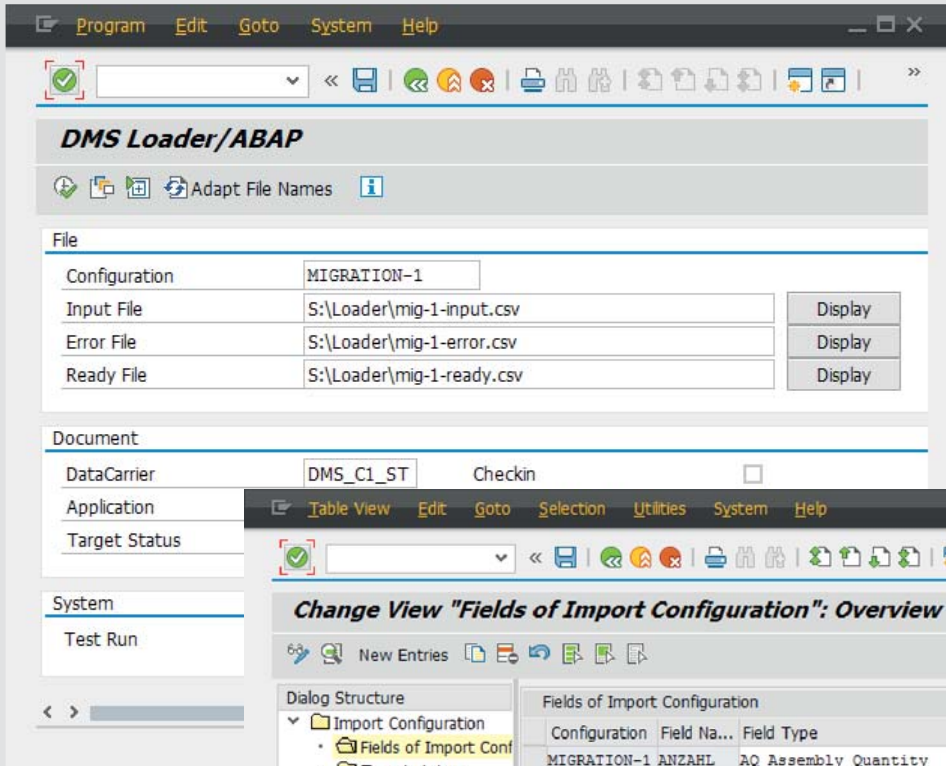
Experts tip:

If you want to actualize your data base in the SAP DMS environment, then you can use the SEAL Systems program "Extended Search and Action". With a wide set of configurable conditions you can identify the correct documents for the actualization process. With the press of a button you can generate a complete job order from the search result list for DMS Loader.

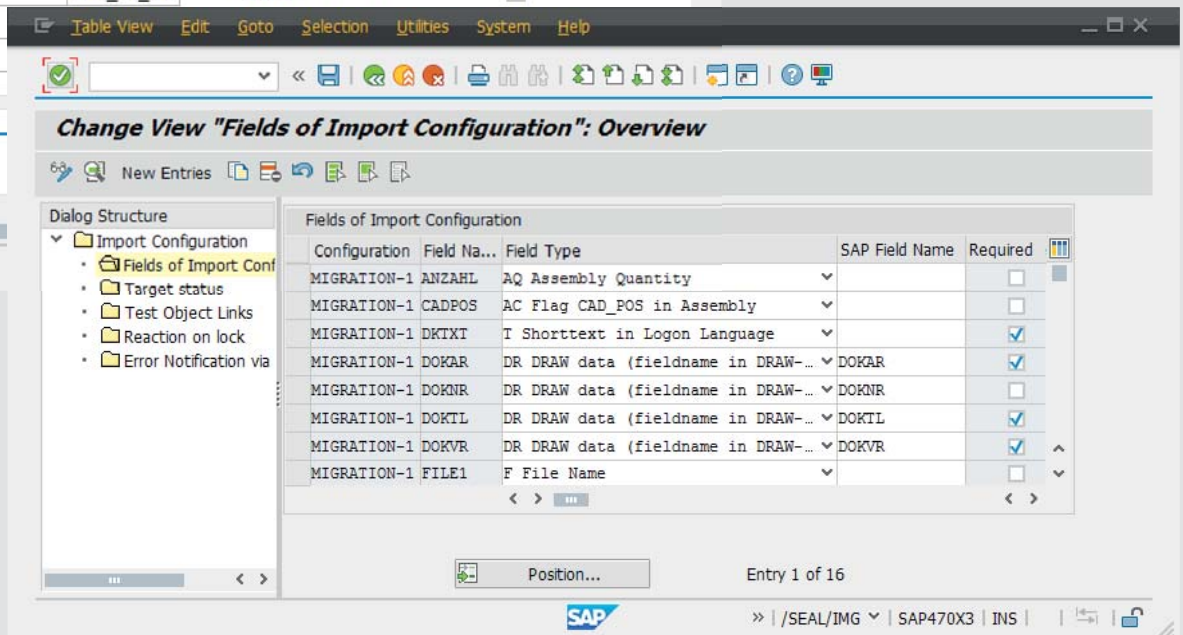


	A	B	C	D	E	F	G	H	I	J	K
	Dok.-Art	Dok.-Nr.	Dok.-Teil	Dok.-Version	Beschreibung Deutsch	Beschreibung Englisch	Beschreibung Französisch	Materialnr.	1. Zeichnung	Applikation 1	2. Zeichnung
2	CH2	10000000258	000	02	Scooter - Vorderteil	Scooter - Front part	Scooter - Panneau avant	SC_1627	u:\Scooter\3444.pdf	PDF	u:\Scooter\3444.hpgl
3	CH2	10000000259	000	01	Scooter - Achse	Scooter - Axis	Scooter - Axe	SC_1628	u:\Scooter\3453.pdf	PDF	u:\Scooter\3453.hpgl
4	CH2	10000000260	000	03	Scooter - Trittbrett	Scooter - Running board	Scooter - Barre de frottement	SC_1629	u:\Scooter\3462.pdf	PDF	u:\Scooter\3462.hpgl
5	CH2	10000000261	000	03	Scooter - Lenker	Scooter - handle bar	Scooter - guidon	SC_1630	u:\Scooter\3445.pdf	PDF	u:\Scooter\3445.hpgl
6	CH2	10000000262	000	02	Scooter - Klemmstück	Scooter - Clamp	Scooter - Attach	SC_1631	u:\Scooter\3447.pdf	PDF	u:\Scooter\3447.hpgl
7	CH2	10000000263	000	02	Scooter - Hinterteil	Scooter - Rear part	Scooter - Panneau arrière	SC_1632	u:\Scooter\3458.pdf	PDF	u:\Scooter\3458.hpgl

- *Example of a Loader file*



Interactive user environment of DMS Loader



Configuration of data for loading process

Installation

Installation is done through an SAP Transport. If necessary an RFC server is configured for background jobs and external calls. The basic customizing is done with the press of a button using BC-Sets.

Additional Userexits

If the included configuration options do not meet customer-specific requirements, there are additional Userexits available to modify the loading process and data.

For example, changes and evaluations of the input data can be done or special following actions can be started.

Loading Methods for SAP

Logging

Optional logging of processes through SAP application dialog with adjustable settings.

Language Support

The product is unicode compatible and available in German and English language. Further languages on request.

Scope of Delivery

Software is delivered as a SAP Transport with detailed documentation as PDF files in English and German language with practice examples.

Product Codes

Je nach Zielobjekt

- SP-LOAD (DVS)
- AL-LOAD (ArchiveLink)
- RM-LOAD (Folders Management)

Related Products and

Options

SP-DXSA (Extended Search and Action)

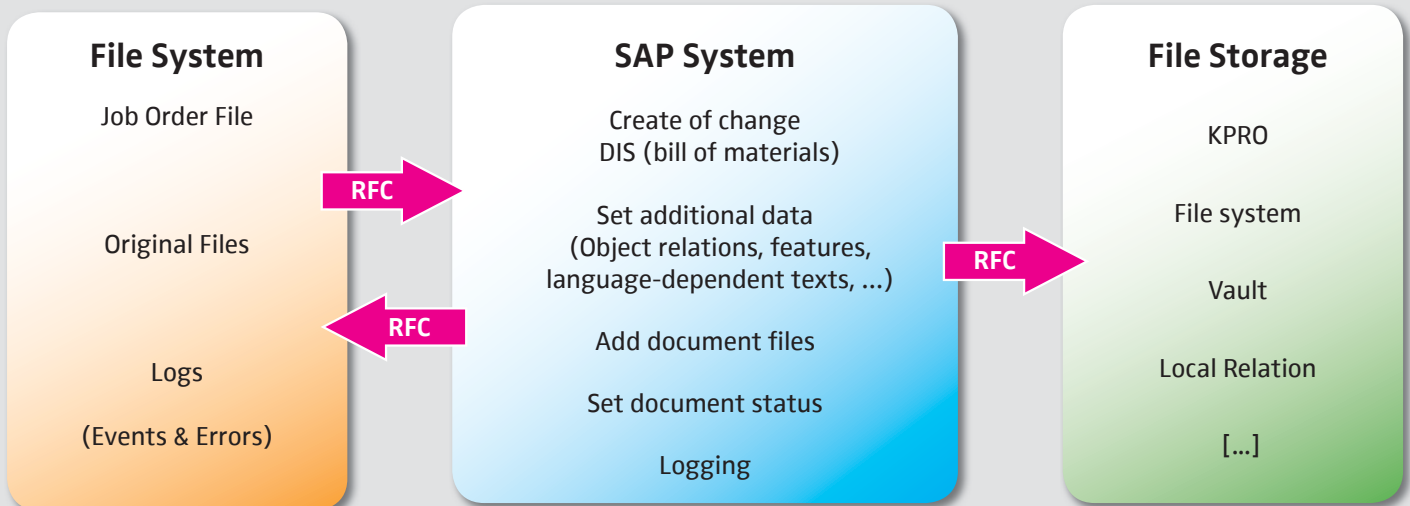
System Requirements

Supports SAP version ECC 6.0 with EHP.

See all details for recommended computer equipment under www.sealsystems.com/service-support/computer-equipment/

Licensing

According to number of SAP named users.



Flow Chart of DMS Loader Process

Typical workflow for a DMS Loader application. With the help of a job order file, SAP document information sets are created or changed.

During the process the original files are checked-in and log files are written.



Adalbert Nübling and Debra Garls are specialist for your questions concerning:

Provision and distribution of documents – Without any disadvantages



Europe/Asia/Australia

Adalbert Nübling
Tel +49 (9195) 926 120
adalbert.nuebling@sealsystems.de



USA/Canada/Americas

Debra Garls
Tel +1 774 200 0933
debra.garls@sealsystems.com



Email: info@sealsystems.com
Web: www.sealsystems.de



We would be happy to answer your questions around the generation of documents from a record and show you the possibilities for your company.



© 2019 SEAL Systems AG. PLOSSYS is a registered trademark of SEAL Systems AG. Other computer and software names mentioned in this brochure are trade names and/or trademarks of the respective manufacturers. Subject to change without notice. Date: January 25, 2019. V237-300812-0-en